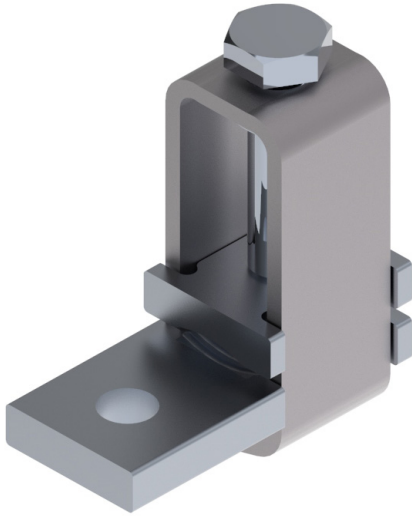


KLH CABLE CONNECTORS UL 486A-486B



- UL 486A-486B
- CSA C22.2 No.65.
- Connector with an intermediate part for applying pressure to the conductor
- Suitable for various wire types (for example fine stranded and solid)
- Narrow profile when installed vertically
- Suitable for 2 x 1/0 AWG - 600 kcmil wires
- Material:
 - Frame: stainless steel
 - Connection bar: tin-plated copper

Type	EAN code 6419410...	Line/Load Wire Size-Str (kcmil/AWG)	Torque Cu lb-in	Key size	Weight kg
KLH 2x150	...358580	2 x 300 - 1/0	390	Hex 17	0.26
KLH 2x240	...358597	2 x 500 - 3/0	660	Hex 19	0.37
KLH 2x300	...358603	2 x 600 - 300	660	Hex 19	0.49