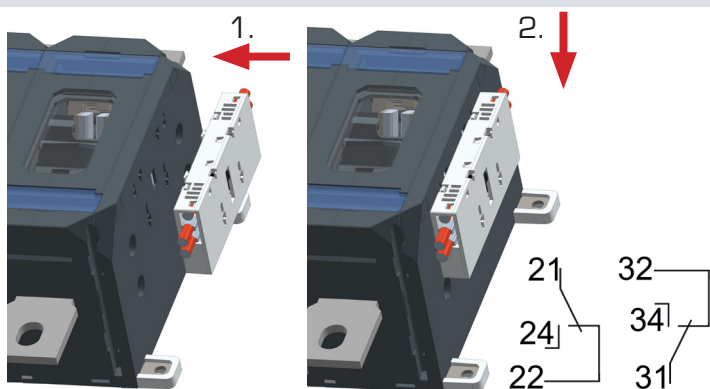
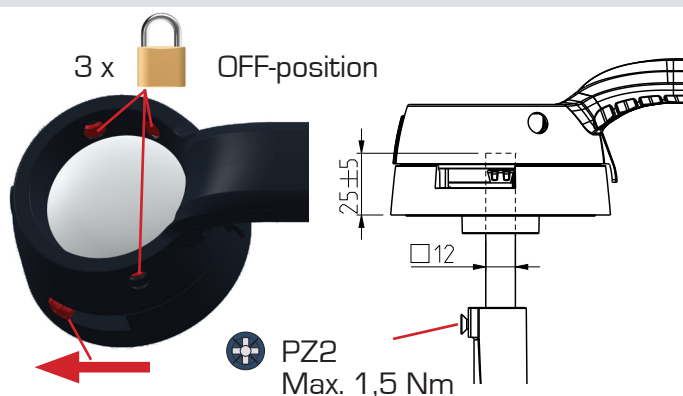


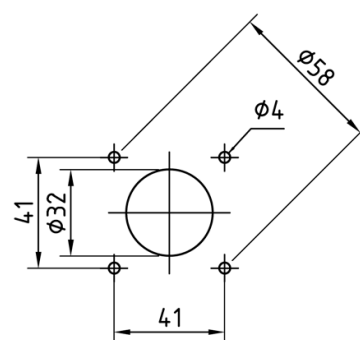
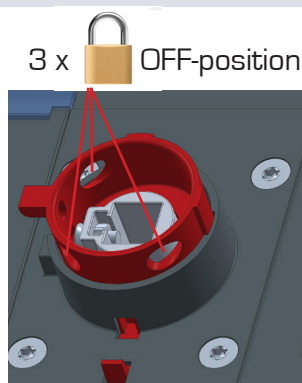
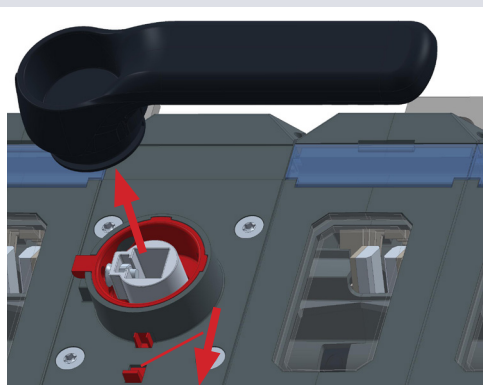
Auxiliary contact:



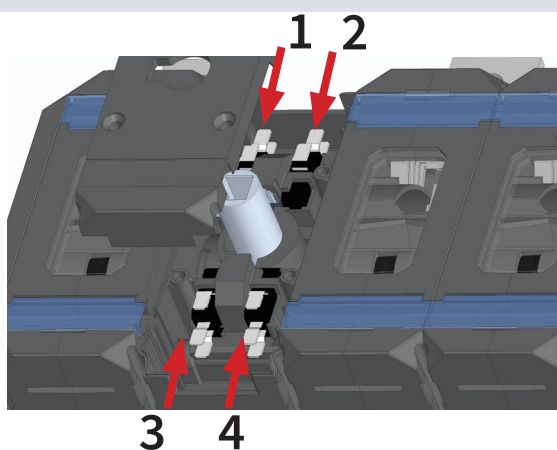
Handle:



Direct handle:



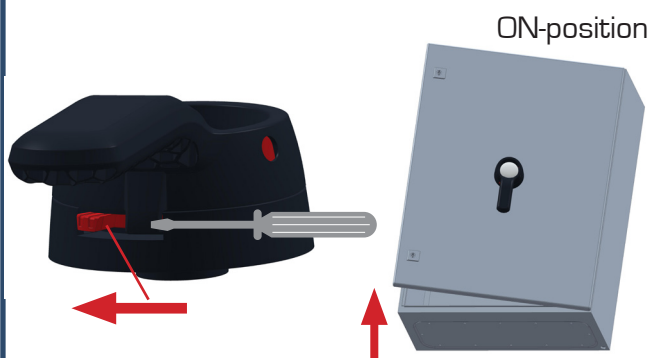
Test:



4 x T20 
4 x microswitch

	TEST	OFF 0	ON 1	
Main contact				Closed Open
Test contact (NO) 3, 4				Closed Open
Test contact (NC) 3, 4				Closed Open
Test ind. contact (NO) 1, 2				Closed Open
Test ind. contact (NC) 1, 2				Closed Open

Defeat, ON-position:



Bolt size M12
50-75 Nm

